

KJ-1350
KJ-1750

Water Jetter Machines

OPERATOR'S MANUAL

- Français – 15
- Castellano – pág. 31



⚠ WARNING!

Read this Operator's Manual carefully before using this tool. Failure to understand and follow the contents of this manual may result in electrical shock, fire and/or serious personal injury.

RIDGID[®]

Find Quality Products Online at:

www.GlobalTestSupply.com

sales@GlobalTestSupply.com

Table of Contents

Recording Form for Machine Model and Serial Number	1
General Safety Information	
Work Area Safety	2
Electrical Safety	2
Personal Safety	2
Tool Use and Care	3
Service	3
Specific Safety Information	
Jetter Safety	3
Description, Specifications and Standard Equipment	
Description	4
Specifications	4
Standard Equipment	4
Jetter Nozzles and Hoses	4
Accessories	5
Machine Assembly	
Instructions for Pump	5
Transport Carts	5
Machine Inspection	5
Machine and Work Area Set-Up	
Jetter Nozzle Selection Chart	7
Jetter Hose Selection Chart	7
Operating Instructions	
Start-Up and Pressure Adjustment	8
Pulse Control Valves	9
Normal Jetting	9
Using the Pulse Mode to Negotiate Bends and Traps	9
Negotiating Difficult Bends	9
Encountering Blockages	10
“Jet-Cleaning” or “Jetting” the Line	10
Pressure Wash Package	10
Washer Operation	10
Accessories	
Jetter Nozzles and Hoses	11
Jetter Accessories	11
H-5 Mini Hose Reel	11
Maintenance Instructions	
Inlet Filter Screen	11
Jetter Nozzle Orifice	11
Jetter Flushing	11
Winterizing	11
Machine Storage	12
Service and Repair	12
Troubleshooting	12
Wiring Diagrams	13
Lifetime Warranty	Back Cover



KJ-1350 & KJ-1750

Water Jetters



KJ-1350 & KJ-1750 Water Jetters	
Record Serial Number below and retain product serial number which is located on nameplate.	
Serial No.	

General Safety Information

WARNING! Read and understand all instructions. Failure to follow all instructions listed below may result in electric shock, fire and/or serious personal injury.

SAVE THESE INSTRUCTIONS!

Work Area Safety

- **Keep your work area clean and well lit.** Cluttered benches and dark areas invite accidents.

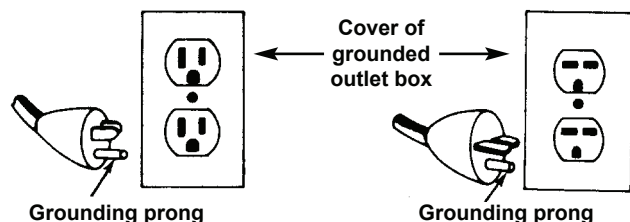
RISK OF FIRE!

- **Do not operate tools in explosive atmospheres, such as in the presence of flammable liquids, gases or dust.** Power tools create sparks which may ignite the dust or fumes.
- **Keep by-standers, children, and visitors away while operating a power tool.** Distractions can cause you to lose control.

Electrical Safety

GROUNDING INSTRUCTIONS:

- **Grounded tools must be plugged into an outlet, properly installed and grounded in accordance with all codes and ordinances. Never remove the grounding plug or modify the plug in any way. Do not use any adapter plugs. Check with a qualified electrician if you are in doubt as to whether the outlet is properly grounded. If the tool should electrically malfunction or break down, grounding provides a low resistance path to carry electricity away from the user.**



- **Avoid body contact with grounded surfaces such as pipes, radiators, ranges and refrigerators.** There is an increased risk of electrical shock if your body is grounded.

GROUND FAULT CIRCUIT INTERRUPTERS (GFCI):

- **Water Jetter is provided with a ground-fault circuit-interrupter (GFCI) built into the power supply cord.** This GFCI provides additional protection from the risk of electrical shock.
- **Before using, test the Ground Fault Circuit Interrupter (GFCI) provided with the power cord to in-**

sure the GFCI is operating properly. Damaged GFCI increases risk of electrical shock.

- **Do not abuse cord or Ground Fault Circuit Interrupter (GFCI). Keep cord from heat, oil, and sharp edges.** Damaged cords increase the risk of electrical shock.

EXTENSION CORDS:

- **Use only an outdoor extension cord marked "W-A" or "W".** These cords are rated for outdoor use and reduce the risk of electrical shock.
- **Use only three-wire extension cords which have three-prong grounding plugs and three-pole receptacles which accept the machine's plug.** Use of other extension cords will not ground the tool and increase the risk of electrical shock.
- **Extension cords are not recommended unless they are plugged into a Ground Fault Circuit Interrupter (GFCI) found in circuit boxes or outlet receptacles.** The GFCI on the machine power cord will not prevent electrical shock from the extension cords.
- **Use proper extension cords.** (See chart.) Insufficient conductor size will cause excessive voltage drop and loss of power.

Minimum Wire Gauge for Extension Cord

Nameplate Amps	Total Length (in feet)		
	0 – 25	26 – 50	51 – 100
0 – 6	18 AWG	16 AWG	16 AWG
6 – 10	18 AWG	16 AWG	14 AWG
10 – 12	16 AWG	16 AWG	14 AWG
12 – 16	14 AWG	12 AWG	NOT RECOMMENDED

- **Do not abuse extension cords. Keep cord from heat, oil and sharp edges.** Do not yank on any cord to disconnect. Damaged cord increases risk of electrical shock.
- **Keep all electric connections dry and off the ground. Do not touch plugs or tool with wet hands.** Reduces the risk of electrical shock.
- **Always disconnect the extension cord from the receptacle before disconnecting the product from the extension cord.** Reduces risk of electrical shock.

Personal Safety

- **Stay alert, watch what you are doing and use common sense when operating a power tool. Do not use tool while tired or under the influence of drugs, alcohol, or medications.** A moment of inattention while operating power tools may result in serious personal injury.

- **Dress properly. Do not wear loose clothing or jewelry. Contain long hair. Keep your hair, clothing, and gloves away from moving parts.** Loose clothes, jewelry, or long hair can be caught in moving parts.
- **Avoid accidental starting. Be sure switch is OFF before plugging in.** Carrying tools with your finger on the switch or plugging in tools that have the switch on invites accidents.
- **Remove adjusting keys or wrenches before turning the tool ON.** A wrench or a key that is left attached to a rotating part of the tool may result in personal injury.
- **Do not overreach. Keep proper footing and balance at all times.** Proper footing and balance enables better control of the tool in unexpected situations.
- **Use safety equipment. Always wear eye protection.** Dust mask, non-skid safety shoes, hard hat, or hearing protection must be used for appropriate conditions.

Tool Use and Care

- **Do not force tool. Use the correct tool for your application.** The correct tool will do the job better and safer at the rate for which it is designed.
- **Do not use tool if switch does not turn it ON or OFF.** Any tool that cannot be controlled with the switch is dangerous and must be repaired.
- **Disconnect the plug from the power source before making any adjustments, changing accessories, or storing the tool.** Such preventive safety measures reduce the risk of starting the tool accidentally.
- **Store idle tools out of the reach of children and other untrained persons.** Tools are dangerous in the hands of untrained users.
- **Maintain tools with care. Keep valves, hoses, and nozzles in proper operating condition.** Properly maintained tools are less likely to malfunction and cause injury.
- **Check for misalignment or binding of moving parts, breakage of parts, and any other condition that may affect the tool's operation. If damaged, have the tool serviced before using.** Many accidents are caused by poorly maintained tools.
- **Use only accessories that are recommended by the manufacturer for your model.** Accessories that may be suitable for one tool may become hazardous when used on another tool.
- **Inspect tool and extension cords periodically and**

replace if damaged. Damaged cords increase the risk of electrical shock.

- **Keep handles dry and clean; free from oil and grease.** Allows for better control of the tool.
- **Should replacement of the cord become necessary, use only identical replacement parts that include GFCI protection.** GFCI protection must be maintained to reduce the risk of electrical shock.

Service

- **Tool service must be performed only by qualified repair personnel.** Service or maintenance performed by unqualified repair personnel could result in injury.
- **When servicing a tool, use only identical replacement parts. Follow instructions in the Maintenance Section of this manual.** Use of unauthorized parts or failure to follow maintenance instructions may create a risk of electrical shock or injury.

Specific Safety Information

⚠ WARNING

Read this operator's manual carefully before using the RIDGID KJ-1350 or KJ-1750 Water Jetters. Failure to understand and follow the contents of this manual may result in electrical shock, fire and/or serious personal injury.

Jetter Safety

- **Do not operate above rated pressure or 140°F (inlet water temperature).** Tool will do a better and safer job if operated at recommended pressures and temperatures.
- **Never permit the end of hose to rotate out of the pipe being cleaned.** Hose can whip and nozzle spray can penetrate skin causing serious injury.
- **Use rubber gloves and rubber boots.** Insulate against possible electrical shock if tools should electrically malfunction or break down.
- **Water spray should not be pointed at any human.** High pressure spray can result in serious injury. If fluid seems to have penetrated skin, seek emergency medical attention at once.
- **Be careful when cleaning drains where cleaning compounds have been used. Avoid direct contact with skin and eyes.** Serious burns can result from some drain cleaning components.

- **Jetter is designed to clean drains. Follow instructions in Operator's Manual on machine's uses.** Other uses may increase the risk of injury.
- **Do not spray flammable liquids.** Spraying flammable liquids could cause a fire or explosion.
- **Do not spray toxic chemicals such as insecticide or weed killer.** Chemicals can be harmful to personnel.
- **Never clean the machine using its own spray wand.** High pressure spray may damage machine components.

Description, Specifications and Standard Equipment

Description

The RIDGID KJ-1350 and KJ-1750 are portable jetters designed to use the combination of water pressure and flow to clear grease and soft blockages out of 1¼" to 4" drain lines. The Jetters can be either hand carried or combined with a two wheeled cart and hose reel for transporting.

The KJ-1350 has a 1½ HP electrical motor with a 1350 PSI pressure rating and a 1.4 GPM flow rate. It is designed for residential and light commercial applications.

The KJ-1750 has 2 HP motor with a 1750 PSI pressure rating and a 1.4 GPM flow rate. It is designed for heavy commercial and industrial applications.

Specifications

KJ-1350

Line Capacity.....Recommended for 1¼" to 4" drain lines through 200 feet.

Motor1½ HP @ 1725 RPM 14 amps

PumpDuplex Plunger

Pressure1350 PSI

Flow Rate1.4 GPM

Weight (jetter only)...67 lbs. (30,5 kgs)

KJ-1750

Line Capacity.....Recommended for 1¼" to 4" drain lines through 200 feet.

Motor2 Hp @ 1725 RPM 17 amps

PumpDuplex Plunger

Pressure1750 PSI

Flow Rate1.4 GPM

Weight (jetter only)...75 lbs. (34,0 kgs)

Standard Equipment

Machine Options (115V)

Catalog No.	Model No.	Description
62587	KJ-1350	KJ-1350 Standard Jetter with Pulse – H-21, H-22, and H-24 ⅛" NPT Nozzles – 25' x ⅛" Sink Trap Hose – Nylon Storage Bag – Nozzle Cleaning Tool
62597	KJ-1350-C	Above With: – H-10 Cart – 100' x ¼" Trap Hose
63107	KJ-1350-2	KJ-1350 Jetter with Dual Pulse – H-21, H-22, and H-24 ⅛" NPT Nozzles – 50' x ⅛" Sink Trap Hose – Nylon Storage Bag – Nozzle Cleaning Tool
63112	KJ-1350-2C	Above With: – H-10 Cart – 100' x ¼" Trap Hose
62687	KJ-1750	KJ-1750 Jetter with Dual Pulse – H-41, H-42, and H-44 ⅛" NPT Nozzles – H-51 and H-52 ¼" NPT Nozzles – 50' x ⅛" Sink Trap Hose – Nylon Storage Bag – Nozzle Cleaning Tool
62697	KJ-1750-C	Above With: – H-30 Cart – 110' x ½" Jet Hose
67332	KJ-1750-SC	62687 with: – H-10 Cart – 100' x ¼" Trap Hose

Machine Options (230V)

Catalog No.	Model No.	Description
66447	KJ-1750-E	KJ-1750 230V Jetter with Dual Pulse – H-41, H-42, and H-44 ⅛" NPT Nozzles – 50' x ⅛" Sink Trap Hose – Nylon Storage Bag – Nozzle Cleaning Tool
66442	KJ-1750-E SC	Above With: H-10 Cart, 100' x ¼" Trap Hose

Jetter Nozzles and Hoses

Catalog No.	Model No.	Description	Hose I.D.	Hose O.D.
64707	H-21	KJ-1350 Propulsion Nozzle	⅛" NPT	
64712	H-22	KJ-1350 Penetrating Nozzle	Fits ⅛" &	
64717	H-24	KJ-1350 Drop Head Nozzle	¼" Hose	
82832	H-25	KJ-1350 Spin Nozzle	⅛" NPT	
64722	H-31	KJ-1350 Propulsion Nozzle	¼" NPT	
64727	H-32	KJ-1350 Penetrating Nozzle	Fits ½" Hose	
64742	H-41	KJ-1750 Propulsion Nozzle	⅛" NPT	
64747	H-42	KJ-1750 Penetrating Nozzle	Fits ⅛" &	
64752	H-44	KJ-1750 Drop Head Nozzle	¼" Hose	
82837	H-45	KJ-1750 Spin Nozzle	⅛" NPT	
64757	H-51	KJ-1750 Propulsion Nozzle	¼" NPT	
64762	H-52	KJ-1750 Penetrating Nozzle	Fits ½" Hose	
52957	H-1825	⅛" x 25' Sink Trap Hose	⅛"	⅜"
53037	H-1850	⅛" x 50' Sink Trap Hose	⅛"	⅜"
45792	H-1425	⅛" x 25'	⅜"	⅜"
47597	H-1435	⅛" x 35'	⅜"	⅜"
47602	H-1450	⅛" x 50'	⅜"	⅜"
49272	H-1475	⅛" x 75'	⅜"	⅜"
49277	H-1400	⅛" x 100'	⅜"	⅜"
64732	H-1415	⅛" x 150'	⅜"	⅜"
50002	HL-1	Flexible Leader, ¼" x 12"	⅛"	⅜"
50007	HL-2	Flexible Leader, ½" x 18"	⅛"	⅜"
47607	H-1250	½" x 50'	¼"	½"
47612	H-1275	½" x 75'	¼"	½"
47617	H-1200	½" x 100'	¼"	½"
51587	H-1211	½" x 110'	¼"	½"
49487	H-1215	½" x 150'	¼"	½"
51597	H-1220	½" x 200'	¼"	½"

⅛" NPT fits ¼" Trap Hose; ¼" NPT fits ½" and ⅜" Jet Hose

Jetter Accessories

Catalog No.	Model No.	Description
64697	H-10	H-10 Cart with Hose Reel
62592	H-10 WH	H-10 Cart with Hose Reel and 100' x 1/4" Trap Hose
62882	H-5	Mini Hose Reel (fits H-10 cart) 150' x 1/4" Capacity
64737	H-30	H-30 Cart with Hose Reel
62877	H-30 WH	H-30 Cart with Hose Reel and 110' x 1/2" Jet Hose
62887	HP-EL	Pressure Wash Package, Electric Jetters
64702	HW-EL	Wash Wand, Electric Jetters
51572	H-1235	1/2" x 35' Wash Hose
62897	H-10A	KJ-1750 Adapter to Fit H-10 Cart
62892	H-30A	KJ-1350 Adapter to Fit H-30 Cart
48367	H-25	Winterizing Kit
47542	H-21	Nozzle Cleaning Tool
67187	H-32	Jet Vac

Machine Assembly

⚠ WARNING

To prevent serious injury, proper assembly of the KJ-1350 and KJ-1750 Jetters is required. The following procedures should be followed:

Instructions for Pump

Remove plug in pump and replace with dipstick/breather cap. Check the pump oil level (jetter is shipped with oil). If oil is low, fill with SAE 30W non-detergent oil.

Transport Carts

H-10 Cart

The two-wheeled cart has been designed to accept the KJ-1350 and the KJ-1350-2 without the need of tools. Lift and slide the jetter onto the cart making sure the one end engages the cart and on the other end, the post inserts into the receptacle (*Figure 1*). Tighten the T-handle to lock the jetter down. An adapter kit is available to mount the KJ-1750 on the H-10.

The hose reel and 100 feet of 1/4" ID jetter hose mounts to the receptacle closest to the handle (*Figure 1*). Place the post on the reel into the socket and tighten the T-handle.

The length of the H-10 transport cart can be shortened for storage or lengthened by loosening two T-handles on the rails and sliding the handle in or out.

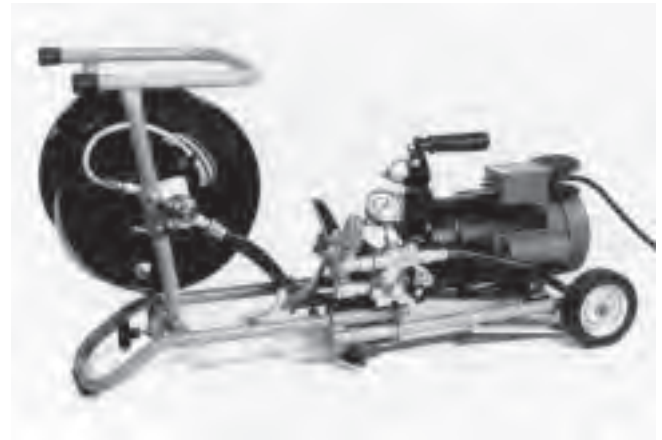


Figure 1 – H-10 Cart and Hose Reel

⚠ WARNING Make sure all T-handles are fully tightened prior to transporting or lifting.

H-30 Cart and Hose Reel

The larger H-30 Cart and Hose Reel is designed to accept the KJ-1750 without the need of tools. Lift the jetter onto the deck and place over the locator pins. Hold in place and attach front and back clips to jetter base. An adapter kit is available to mount the KJ-1350's to the H-30.

Machine Inspection

⚠ WARNING



To prevent serious injury, inspect your Jetter. The following inspection procedures should be performed on a daily basis.

1. Check pump oil level. If low, fill with a SAE 30 weight non-detergent oil.

NOTE! Jetter unit should be stored base down. Never store in up-right position as oil from pump will leak from reservoir.

2. Inspect the Jetter for any broken, missing, misaligned or binding parts as well as any other conditions which may affect the safe and normal operation of the machine. If any of these conditions are present, do not use the Jetter until any problem has been repaired.
3. Inspect the power cord, ground fault circuit interrupter (GFCI) and plug for damage. If the plug has been modified, is missing the grounding pin or if the

cord is damaged, do not use the jetter until the cord has been replaced.

⚠ WARNING When replacing cord, use only identical replacement parts that includes GFCI protection.

4. Check inlet filter screen for debris that can restrict water flow into the pump resulting in poor performance. If filter screen is dirty or clogged, remove, clean and replace.
5. Use accessories that are designed for your Jetter and meet the needs of your application. The correct accessories allow you to do the job successfully and safely. Accessories suitable for use with other equipment may be hazardous when used with this machine.
6. Clean any oil, grease or dirt from all equipment handles and controls. This reduces the risk of injury due to a tool or control slipping from your grip.
7. Check the jetter nozzle orifices for debris. If an orifice is blocked, use nozzle cleaning tool to clear and remove debris.
8. Inspect hoses for wear and damage. Hoses should be replaced when they become damaged.

⚠ WARNING Damaged hoses can burst causing serious injury. Only use hoses whose pressure rating meets or exceeds that of the jetter.

Machine and Work Area Set-Up

⚠ WARNING



To prevent serious injury, proper set-up of the machine and work area is required. The following procedures should be followed to set-up the machine:

1. Check work area for:
 - Adequate lighting.
 - No flammable liquids, vapors or dust that may ignite.
 - 20 amp grounded electrical outlet.
 - Clear path to the electrical outlet that does not contain any sources of heat or oil, sharp edges or moving parts that may damage electrical cord.
 - Dry place for machine and operator. Do not use the machine while standing in water.
 - Water supply.

NOTE! If a connection is made to a potable water system, the system should be protected against backflow in accordance with all local codes and ordinances.

2. Connect the quick coupling fitting to the water supply hose. Connect water supply hose to the jetter inlet and close the inlet supply valve. (*Figure 2*)



Figure 2 – Connect Water Supply Hose to Jetter. Close Inlet Supply Valve (shown in closed position.)

3. Connect the other end of the water supply hose to the water faucet and turn the faucet on. Make sure there are no kinks or unnecessary bends in the supply hose.

CAUTION Hot water improves the jetter's performance, particularly when clearing grease blockages. Limit water temperature to below 140°F.

4. Connect a jetter hose to the jetter's outlet quick coupling on the end of the connection hose (*Figure 3*). (*Refer to Jetter Hose Selection Chart*)
5. If a hose reel is used, attach connection hose to plug fitting on hose reel.
6. Insert jetter hose 6" – 8" into drain without a jetter nozzle.
7. Open the inlet supply valve and run water through the jetter and hoses with unit OFF.
8. Continue to run water through the jetter until all air has been purged.
9. Close the inlet supply valve.

NOTE! Both the KJ-1350's and KJ-1750 Jetters have check valves for back flow prevention.

10. Attach a jetter nozzle to the jet hose. (*Refer to Jetter Nozzle Selection Chart.*) Hand-tighten for a snug fit. Over-tightening can interfere with water flow through the nozzle orifices causing reduced flow and poor performance.



Figure 3 – Connect jetter hose to jetter

⚠ WARNING Nozzles should not be removed from the drain while pressurized. Mark the hose at a distance of 24" (60cm) from nozzle to indicate the location of the nozzle.

11. Insert the jet hose into the line several feet.
12. Open the inlet supply valve and verify that water flows freely through the nozzle.
13. Plug the Jetter into the electrical outlet making sure to position the power cord along the clear path selected earlier. If the power cord does not reach the outlet, use an extension cord in good condition.

⚠ WARNING To avoid electrical shock and electrical fires, never use an extension cord that is damaged or does not meet the following requirements:

- The cord has a three-prong plug similar to shown in Electrical Safety section.
- The cord is rated as "W" or "W-A" if being used outdoors.
- The cord has sufficient wire thickness (12 AWG). If the wire thickness is too small, the cord may over-heat, melting the cord's insulation or causing nearby objects to ignite.

⚠ WARNING To reduce risk of electrical shock, keep all electrical connections dry and off the ground. Do not touch plug with wet hands. Test the Ground Fault Circuit Interrupter (GFCI) provided with the electric cord to insure it is operating correctly. When test button is pushed in, the indicator light should go off. Reactivate by pushing the reset button in. If indicator light goes on, the machine is ready to use. If the GFCI does not function correctly, do not use the machine.

JETTER NOZZLE SELECTION CHART

	Thread Size	KJ-1350	KJ-1750	
		1/8" NPT	1/8" NPT	1/4" NPT
	Hose Inside Diameter	1/8" & 3/16"	1/8" & 3/16"	1/4"
Features three reverse jet thrusts for maximum propulsion to jet long distances. Use this nozzle for most applications.		H-21	H-41	H-51
Uses three jet thrusters in reverse plus one jet pointed forward to penetrate solid grease or sludge blockages. The forward jet blasts a small hole in the blockage for the nozzle to follow. It is also very effective when jetting ice blockages.		H-22	H-42	H-52
Use the drop head to help negotiate difficult bends.		H-24	H-44	
Use spinner nozzle to clean grease and similar blockages.		H-25	H-45	

JETTER HOSE SELECTION CHART

Applications	Pipe Size	Nozzle Size	Hose Size	Hose ID
Bathroom sinks, urinals, and small lines.	1 1/4" – 2"	1/8" NPT	1/8"	1/8"
Kitchen sinks, laundry tubs and stacks, clean-outs, and vents.	2" – 3"	1/8" NPT	1/4"	3/16"
Shower and floor drains, lateral lines, and grease traps.	3" – 4"	1/4" NPT	1/2"	1/4"

Operating Instructions

⚠ WARNING



Always wear eye protection to protect eyes from dirt and other foreign objects. Use rubber gloves and rubber boots.

Do not spray flammable liquids or toxic chemicals.

Water spray should not be pointed at any human. Do not hold nozzle when pressurized.

Start-Up and Pressure Adjustment

NOTE! Both the KJ-1350 and KJ-1750 Jetters have pulse actuators (*Figure 5*). The KJ-1350-2 and KJ-1750 have an additional pulse valve (*Figure 7*). Both the pulse actuator and pulse dampener valve must be in the OFF position prior to turning the jetter switch ON. To obtain maximum pressure, both pulse controls must be OFF.

1. Turn the unloader valve counter-clockwise to insure the pressure is backed down. Turn jetter switch ON and adjust the unloading valve so that the pressure gauge shows a maximum of 1350 PSI (green zone) on the KJ-1350 and KJ-1350-2. At this pressure, the KJ-1350 Jetters draw approximately 14 amps when supplied with 115 volt A/C current.
2. On the KJ-1750, adjust the unloading valve so that the pressure gauge shows 1750 PSI (green zone). At this pressure, the KJ-1750 draws approximately 17 amps when supplied with 115 volt A/C current. (*Figure 4*)

NOTE! Operating pressure is increased by rotating the unloading valve clock-wise +. If electrical circuit is not dedicated to Jetter, it may be necessary to reduce pressure (amp draw) to prevent tripping the circuit breaker or blowing a fuse.



Figure 4 – Adjust the unloading valve

3. If the jetter will not generate pressure:

- Make sure the water faucet is completely OPEN and the inlet supply valve is OPEN.
- Check the filter screen at the inlet port to the jetter. Make certain it is clear of debris.
- Cycle the pulse actuator on the KJ-1350 and KJ-1750 ON and OFF several times while the jetter is running to clear any trapped air in the system.
- Cycle the pulse dampener valve on the KJ-1350-2 and KJ-1750 ON and OFF several times to clear trapped air.
- Rotate unloader valve clockwise to make sure it increases pressure.

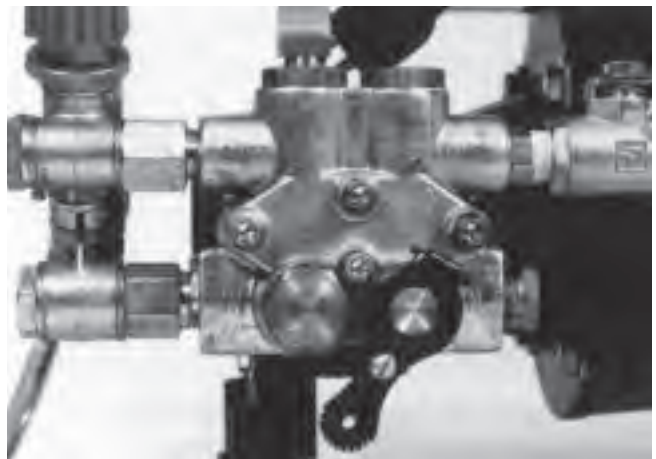
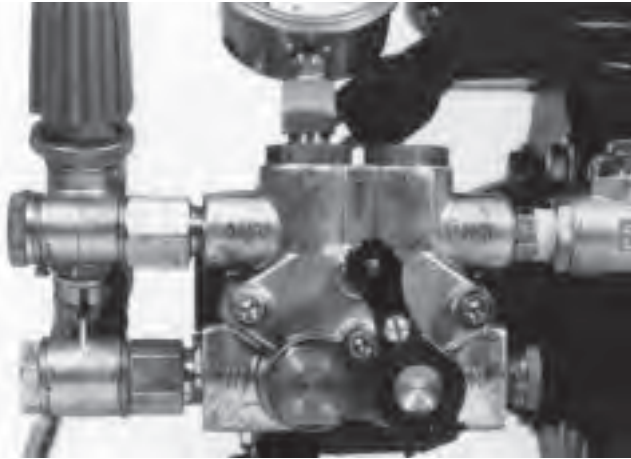


Figure 5 – Pulse Actuator ON


Figure 6 – Pulse Actuator OFF

Pulse Control Valves

The KJ-1350 and KJ-1750 Jetters have a pulse actuator on the pump. Rotating the lever clockwise will engage the pulse. The KJ-1350-2 and KJ-1750 Jetters have two levels of pulsation with the addition of a pulse valve. There are now three different pulses:

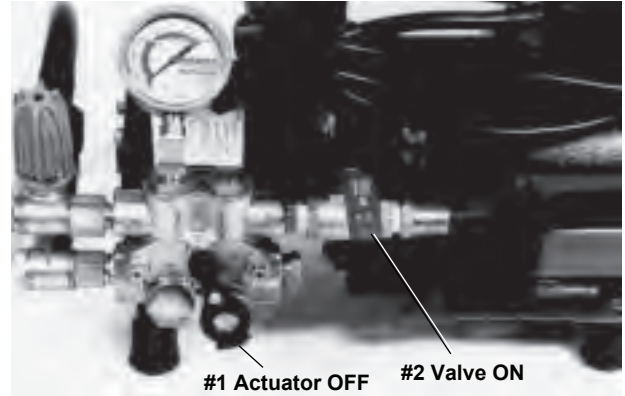
	Actuator (#1)		Valve (#2)	
Normal	OFF	All	OFF	KJ-1350-2
Bends & Traps	OFF		ON	KJ-1750
Difficult Bends	ON		ON	

For optimum jetter performance, you must understand the proper use of the pulse actuator and pulse valve.

Normal Jetting

Turn pulse actuator (#1) to the OFF position. Turn the pulse valve (#2) on the KJ-1350-2 and KJ-1750 to the OFF position. This results in maximum pressure but no pulse action.

1. When the jetter nozzle encounters a bend, its advance will usually slow or stop. The jetter hose has a slight bend or *set* to it. The reverse thrust of the nozzle will advance the jetter hose but it is also necessary to manually feed and rotate the jetter hose to *work the set* around the bends.
2. If the hose won't advance, pull back on the hose slightly and rotate the hose a quarter to a half turn. Then advance the hose forward.
3. If the jetter hose is not advancing, it may be necessary to induce some pulse action.

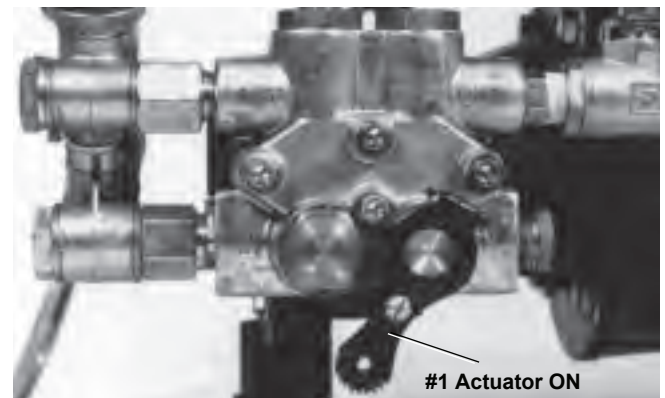

Figure 7 – Negotiating Bends and Traps

Using the Pulse Mode to Negotiate Bends and Traps

In some cases, simply rotating the hose will not be enough to negotiate a bend or trap. In these instances, turn the pulse actuator (#1) to the OFF position and valve (#2) for KJ-1350-2 and KJ-1750 to the ON position (*Figure 7*). In the pulse mode, the pump induces large pulsation and jetter hose vibration. Rotating the hose while operating in the pulse mode will normally overcome stubborn bends and traps.

Negotiating Difficult Bends w/ KJ-1350-2 and KJ-1750

By turning the pulse actuator (#1) and the pulse valve (#2) to the ON position on the KJ-1350-2 and the KJ-1750 will achieve a higher amplitude of pulse. This will allow the jetter hose and nozzle to vibrate and negotiate difficult bends. (*Figure 8*)


Figure 8 – Negotiating Difficult Bends

NOTE! In the pulse mode, the jetter's pressure gauge will read approximately 400 - 600 PSI.

NOTE! If at any time during the jetting process the pressure oscillates up and down between 100 and 1000 PSI, stop the jetter: Turn the Jetter and water supply OFF, remove the jetter nozzle and check the nozzle orifices (They are probably blocked). Clean them with the nozzle cleaning tool by pushing the proper size wire completely through each thruster orifice.

If the problem persists, remove the nozzle and insert the hose into the drain. Check the inlet filter screen at the inlet port and make sure it is clean. Restart to flush the system of any trapped air or debris that could be hampering the unit's operation.

Once through the bend or trap, return the pulse control actuator lever and valve to the OFF position. Continue the jetter head's advance.

Encountering Blockages

Normally, the jetter nozzle will pass right through grease or soft blockages. More stubborn blockages may require manual manipulation of the hose combined with the pulse action of the pump.

Once through the obstruction, pass the jetter nozzle back and forth several times through that section of the drain to ensure it is thoroughly cleared, then advance the nozzle several feet further down the line before retrieving the hose.

"Jet-Cleaning" or "Jetting" the Line

The Jetter's cleaning action occurs by the nozzle orifices directing high pressure water at the walls of the drain line. This same pressure produces the thrust that pushes the nozzle down the line. This cleaning action helps to restore the drain to the full inside line diameter. The slower the jetter hose is retrieved, the better the results.

Before the jetter hose is retrieved back out of the drain, turn the pulse dampener valve (#2) to the OFF position. This will maximize the pressure and flow at the nozzle. Slowly retrieve the jetter hose and clean the inside walls of the drain.

▲ WARNING Never permit end of hose to rotate out of the pipe being cleaned. Hose can whip and nozzle spray can penetrate skin causing serious injury.

Pressure Wash Package

Both the KJ-1350 and KJ-1750 can operate as pressure washers to spray wash service vehicles, tools, drain cleaning equipment and cables. The wash wand mounted to the 1/4" x 35' hose is attached to the jetter outlet port. Detergent can be dispensed for more effective cleaning by using the injector manifold. Attach the supply hose to

the manifold and submerge the other end into a liquid solution.

Washer Operation

▲ WARNING Water spray should not be pointed at any human.

To utilize the pressure wash feature make sure both pulse valves are in the OFF position. Adjust system pressure with the wash wand activated. The wash wand will fit the 1/4" ID x 35' hose provided or any 1/4" ID jetter hose. The injector introduces a detergent into the water flow for more effective cleaning. To use the injector:

1. Attach the injector to the outlet port by removing the connection hose and quick coupling on the Jetter. Use thread sealant to prevent any leaks. Make sure arrow on manifold is going in the right direction (away from Jetter).
2. Re-attach connection hose and attach wash wand hose to quick coupling.
3. Place one end of a siphon hose into the detergent's container and other end on injector manifold.
4. The wash wand has two adjustments on the nozzle. By rotating the nozzle the wash pattern can be wide or narrow. The nozzle can be pushed forward for low pressure. Detergents are only dispensed when wash wand nozzle is in the low pressure setting.
5. After the application, pull the nozzle back to achieve full pressure.

▲ WARNING Do not spray flammable liquids or toxic materials.

Accessories

⚠ WARNING Only the following RIDGID products have been designed to function with the Water Jetting Machine. Other accessories suitable for use with other tools may become hazardous when used on the machines. To prevent serious injury, use only the recommended accessories.

Jetter Nozzles and Hoses

Catalog No.	Model No.	Description	Hose I.D.	Hose O.D.
64707	H-21	KJ-1350 Propulsion Nozzle	1/8" NPT	
64712	H-22	KJ-1350 Penetrating Nozzle	Fits 1/8" &	—
64717	H-24	KJ-1350 Drop Head Nozzle	1/4" Hose	—
82832	H-25	KJ-1350 Spin Nozzle	1/8" NPT	—
64722	H-31	KJ-1350 Propulsion Nozzle	1/4" NPT	—
64727	H-32	KJ-1350 Penetrating Nozzle	Fits 1/2" Hose	—
64742	H-41	KJ-1750 Propulsion Nozzle	1/8" NPT	
64747	H-42	KJ-1750 Penetrating Nozzle	Fits 1/8" &	—
64752	H-44	KJ-1750 Drop Head Nozzle	1/4" Hose	—
82837	H-45	KJ-1750 Spin Nozzle	1/8" NPT	—
64757	H-51	KJ-1750 Propulsion Nozzle	1/4" NPT	—
64762	H-52	KJ-1750 Penetrating Nozzle	Fits 1/2" Hose	—
52957	H-1825	1/8" x 25' Sink Trap Hose	1/8"	3/16"
53037	H-1850	1/8" x 50' Sink Trap Hose	1/8"	3/16"
45792	H-1425	1/4" x 25'	3/16"	1/4"
47597	H-1435	1/4" x 35'	3/16"	1/4"
47602	H-1450	1/4" x 50'	3/16"	1/4"
49272	H-1475	1/4" x 75'	3/16"	1/4"
49277	H-1400	1/4" x 100'	3/16"	1/4"
64732	H-1415	1/4" x 150'	3/16"	1/4"
50002	HL-1	Flexible Leader, 1/4" x 12"	1/8"	3/16"
50007	HL-2	Flexible Leader, 1/2" x 18"	1/8"	3/16"
47607	H-1250	1/2" x 50'	1/4"	1/2"
47612	H-1275	1/2" x 75'	1/4"	1/2"
47617	H-1200	1/2" x 100'	1/4"	1/2"
51587	H-1211	1/2" x 110'	1/4"	1/2"
49487	H-1215	1/2" x 150'	1/4"	1/2"
51597	H-1220	1/2" x 200'	1/4"	1/2"

1/8" NPT fits 1/4" Trap Hose

1/4" NPT fits 1/2" and 3/8" Jet Hose

Jetter Accessories

Catalog No.	Model No.	Description
64697	H-10	H-10 Cart with Hose Reel
62592	H-10 WH	H-10 Cart with Hose Reel and 100' x 1/4" Trap Hose
62882	H-5	Mini Hose Reel (fits H-10 cart) 150' x 1/4" Capacity
64737	H-30	H-30 Cart with Hose Reel
62877	H-30 WH	H-30 Cart with Hose Reel and 110' x 1/2" Jet Hose
62887	HP-EL	Pressure Wash Package, Electric Jetters
64702	HW-EL	Wash Wand, Electric Jetters
51572	H-1235	1/2" x 35' Wash Hose
62897	H-10A	KJ-1750 Adapter to Fit H-10 Cart
62892	H-30A	KJ-1350 Adapter to Fit H-30 Cart
48367	H-25	Winterizing Kit
47542	H-21	Nozzle Cleaning Tool
67187	H-32	Jet Vac

H-5 Mini Hose Reel

The hose reel and 100' of 1/4" jetter hose that is included with the H-10 cart is available as an accessory (H-5). The reel has a total capacity of 150'. The hose reel, along with a foot valve, can be used for remote jetting through roof vents.

Maintenance Instructions

WARNING

Make sure machine is unplugged from power source before performing maintenance or making any adjustment.

Inlet Filter Screen

Before each use:

- Check inlet filter screen for debris that can restrict water flow into the pump resulting in poor performance. If filter screen is dirty or clogged, remove, clean, and replace.

Jetter Nozzle Orifice

Before each use:

- Check the jetter nozzle orifices for debris. If an orifice is blocked, use nozzle cleaning tool to clear and remove debris.

Jetter Flushing

After use:

- Run clear water through the jetter and hose(s) in order to flush out debris or detergent. Make sure nozzle is removed from hose for maximum water flow. Flushing should always be done after using the injector in order to flush out detergents.

Winterizing

CAUTION Freezing temperatures can cause serious damage to the pump. If such cold conditions are to be encountered in storage, charge the jetter with RV (non-ethylene glycol) Anti-Freeze.

The winterizing kit (H-25) includes RV Anti-Freeze and a delivery hose with quick coupling that attaches to the inlet valve.

⚠ WARNING EPA mandates that no substances containing ethylene glycol can be used in a drainage system.

Machine Storage

⚠ WARNING Motor-driven equipment must be kept indoors or well covered in rainy weather. Store the machine in a locked area that is out of reach of children and people unfamiliar with drain cleaners. This machine can cause serious injury in the hands of untrained users.

Service and Repair

⚠ WARNING



The “Maintenance Instructions” will take care of most of the service needs of this machine. Any problems not addressed by this section should only be handled by an authorized RIDGID service technician.

Machine should be taken to a RIDGID Independent Authorized Service Center or returned to the factory. All repairs made by Ridge service facilities are warranted against defects in material and workmanship.

⚠ WARNING When servicing this machine, only identical replacement parts should be used. Failure to follow these instructions may create a risk of serious injury.

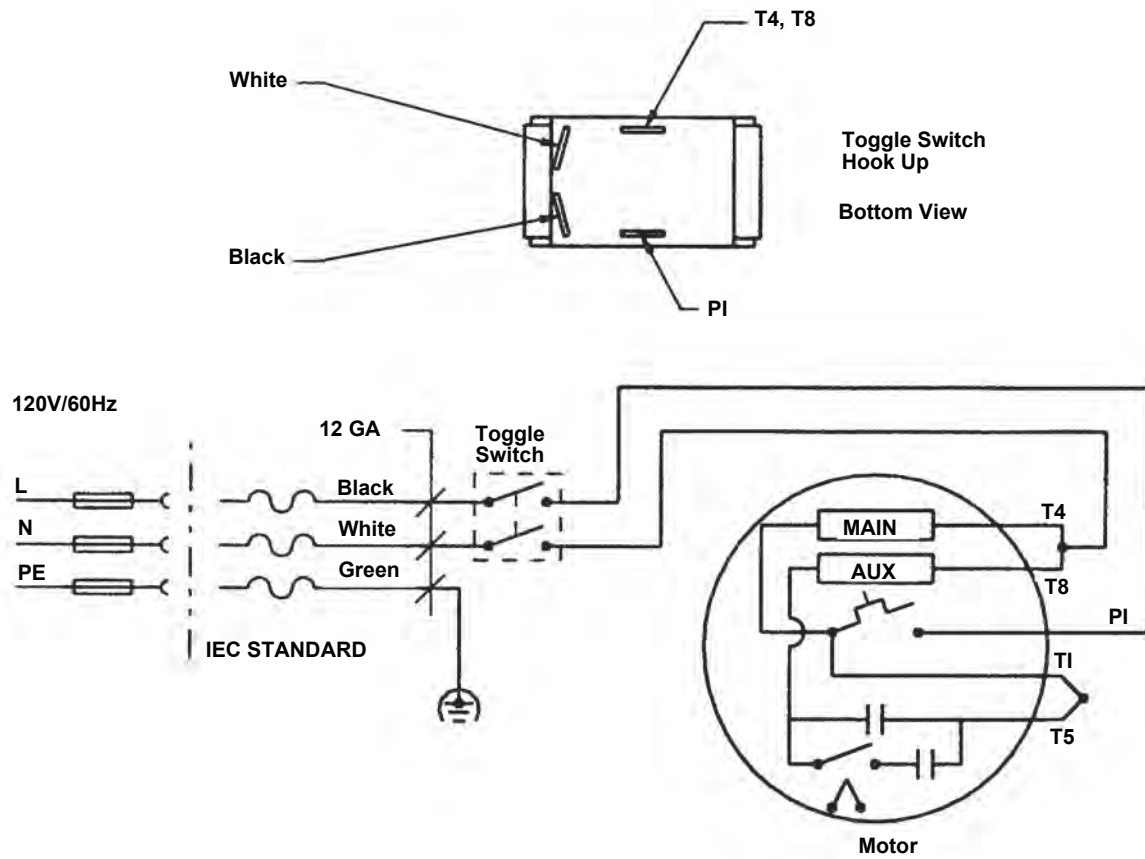
If you have any questions regarding the service or repair of this machine, call or write to:

Troubleshooting

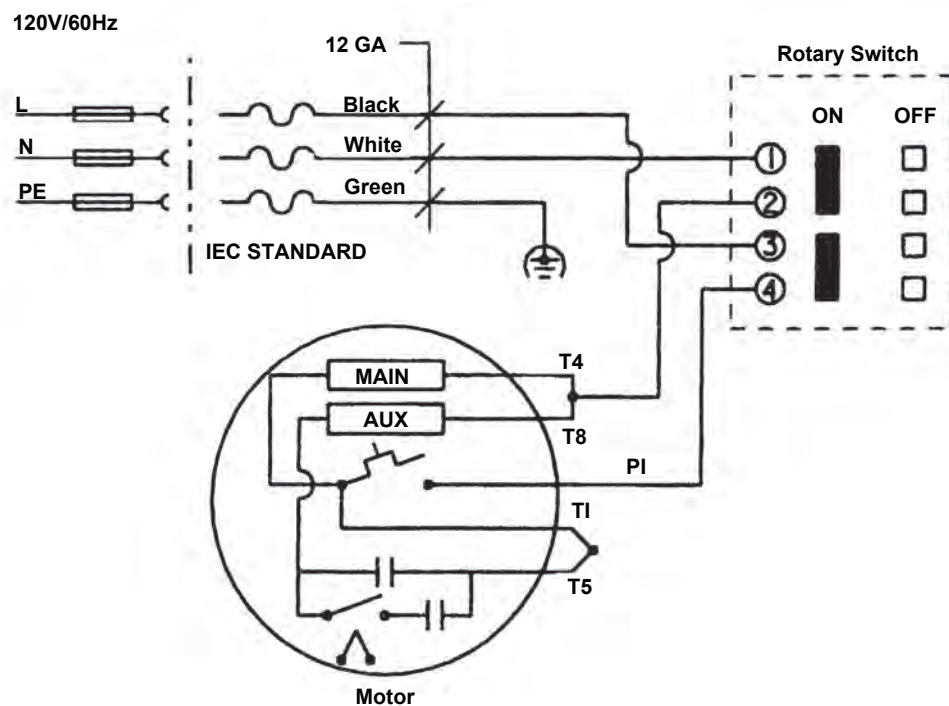
PROBLEM	CAUSE	CORRECTION
Jetter runs but produces little or no pressure.	Inadequate water supply.	Make certain water supply faucet is ON. Make certain jetter's water supply inlet valve is ON. Make certain water supply hose is clear and not kinked or collapsed.
Jetter will not adjust to full operating pressure at start-up.	Air is trapped in system. Jetter nozzle thrusters are blocked.	Remove nozzle from jet hose and run jetter to flush air/debris from system. Remove nozzle and clean thruster orifices with nozzle cleaning tool.
Jetter pressure gauge oscillates from 100 to 1000 PSI.	Jetter nozzle thrusters are blocked. Debris or air trapped in system.	Remove nozzle. Use nozzle cleaning tool to clear nozzle orifices: select proper wire size and push completely through each thruster orifice to remove debris. Remove nozzle and insert jet hose in drain line. Run jetter to flush trapped air or debris.

Wiring Diagrams

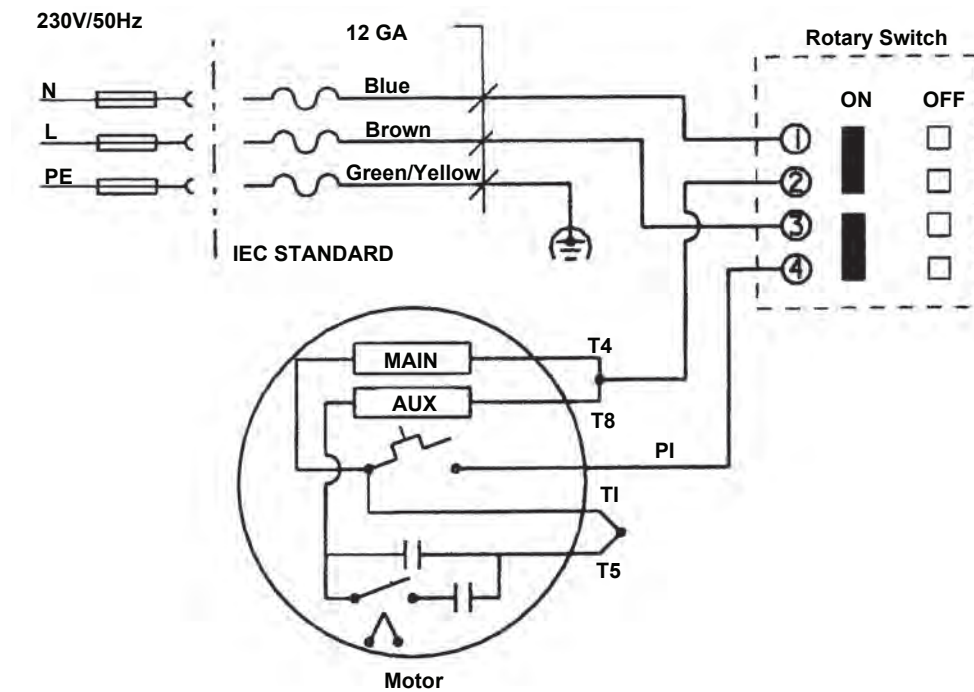
KJ-1350 — 120V



KJ-1750 — 120V



KJ-1750-Export — 230V



**What is covered**

RIGID® tools are warranted to be free of defects in workmanship and material.

How long coverage lasts

This warranty lasts for the lifetime of the RIGID® tool. Warranty coverage ends when the product becomes unusable for reasons other than defects in workmanship or material.

How you can get service

To obtain the benefit of this warranty, deliver via prepaid transportation the complete product to RIDGE TOOL COMPANY, Elyria, Ohio, or any authorized RIGID® INDEPENDENT SERVICE CENTER. Pipe wrenches and other hand tools should be returned to the place of purchase.

What we will do to correct problems

Warranted products will be repaired or replaced, at RIDGE TOOL'S option, and returned at no charge; or, if after three attempts to repair or replace during the warranty period the product is still defective, you can elect to receive a full refund of your purchase price.

What is not covered

Failures due to misuse, abuse or normal wear and tear are not covered by this warranty. RIDGE TOOL shall not be responsible for any incidental or consequential damages.

How local law relates to the warranty

Some states do not allow the exclusion or limitation of incidental or consequential damages, so the above limitation or exclusion may not apply to you. This warranty gives you specific rights, and you may also have other rights, which vary, from state to state, province to province, or country to country.

No other express warranty applies

This FULL LIFETIME WARRANTY is the sole and exclusive warranty for RIGID® products. No employee, agent, dealer, or other person is authorized to alter this warranty or make any other warranty on behalf of the RIDGE TOOL COMPANY.

**Ce qui est couvert**

Les outils RIDGE® sont garantis contre tous vices de matériaux et de main d'oeuvre.

Durée de couverture

Cette garantie est applicable durant la vie entière de l'outil RIDGE®. La couverture cesse dès lors que le produit devient inutilisable pour raisons autres que des vices de matériaux ou de main d'oeuvre.

Pour invoquer la garantie

Pour toutes réparations au titre de la garantie, il convient d'expédier le produit complet en port payé à la RIDGE TOOL COMPANY, Elyria, Ohio, ou bien le remettre à un réparateur RIDGE® agréé. Les clés à pipe et autres outils à main doivent être ramenés au lieu d'achat.

Ce que nous ferons pour résoudre le problème

Les produits sous garantie seront à la discrétion de RIDGE TOOL, soit réparés ou remplacés, puis réexpédiés gratuitement ; ou si, après trois tentatives de réparation ou de remplacement durant la période de validité de la garantie le produit s'avère toujours défectueux, vous aurez l'option de demander le remboursement intégral de son prix d'achat.

Ce qui n'est pas couvert

Les défaillances dues au mauvais emploi, à l'abus ou à l'usure normale ne sont pas couvertes par cette garantie. RIDGE TOOL ne sera tenue responsable d'aucuns dommages directs ou indirects.

L'influence de la législation locale sur la garantie

Puisque certaines législations locales interdisent l'exclusion des dommages directs ou indirects, il se peut que la limitation ou exclusion ci-dessus ne vous soit pas applicable. Cette garantie vous donne des droits spécifiques qui peuvent être éventuellement complétés par d'autres droits prévus par votre législation locale.

Il n'existe aucune autre garantie expresse

Cette GARANTIE PERPETUELLE INTEGRALE est la seule et unique garantie couvrant les produits RIDGID®. Aucun employé, agent, distributeur ou tiers n'est autorisé à modifier cette garantie ou à offrir une garantie supplémentaire au nom de la RIDGE TOOL COMPANY.

**Qué cubre**

Las herramientas RIDGID están garantizadas contra defectos de la mano de obra y de los materiales empleados en su fabricación.

Duración de la cobertura

Esta garantía cubre a la herramienta RIDGID durante toda su vida útil. La cobertura de la garantía caduca cuando el producto se torna inservible por razones distintas a las de defectos en la mano de obra o en los materiales.

Cómo obtener servicio

Para obtener los beneficios de esta garantía, envíe mediante porte pagado, la totalidad del producto a RIDGE TOOL COMPANY, en Elyria, Ohio, o a cualquier Servicentro Independiente RIDGID. Las llaves para tubos y demás herramientas de mano deben devolverse a la tienda donde se adquirieron.

Lo que hacemos para corregir el problema

El producto bajo garantía será reparado o reemplazado por otro, a discreción de RIDGE TOOL, y devuelto sin costo; o, si aún resulta defectuoso después de haber sido reparado o sustituido tres veces durante el período de su garantía, Ud. puede optar por recibir un reembolso por el valor total de su compra.

Lo que no está cubierto

Esta garantía no cubre fallas debido al mal uso, abuso o desgaste normal. RIDGE TOOL no se hace responsable de daño incidental o consiguiente alguno.

Relación entre la garantía y las leyes locales

Algunos estados de los EE.UU. no permiten la exclusión o restricción referente a daños incidentales o consiguientes. Por lo tanto, puede que la limitación o restricción mencionada anteriormente no rija para Ud. Esta garantía le otorga derechos específicos, y puede que, además, Ud tenga otros derechos, los cuales varían de estado a estado, provincia a provincia o país a país.

No rige ninguna otra garantía expresa

Esta GARANTIA VITALICIA es la única y exclusiva garantía para los productos RIDGID. Ningún empleado, agente, distribuidor u otra persona está autorizado para modificar esta garantía u ofrecer cualquier otra garantía en nombre de RIDGE TOOL COMPANY.



EMERSON™
Professional Tools